



CATALOGUE  
OF PRODUCTS  
for stylish salon  
manicure





# E.MI FASHION WORLD

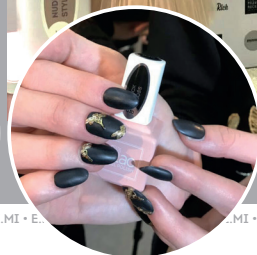
• E.MI FASHION WORLD • E.MI • E.MI FASHION WORLD • E.MI • E.MI FASHION WORLD • E.MI • E.MI FASHION WORLD • E.MI • E.MI FASHION WORLD • E.MI • E.MI FASHION WORLD •

LONDON  
FASHION WEEK

PARIS  
FASHION WEEK

MOSCOW  
FASHION WEEK

SEOUL  
FASHION WEEK



## E.MI – INTERNATIONAL BRAND OF FASHION SALON MANICURE



28 COUNTRIES | 156 CITIES | 32 000 SALONS



### FAST

The procedure takes  
1-1.5 hours



### FASHIONABLE

New collections  
every season



### LASTING

Perfect manicure  
for 1 month



7  
FREE



- Raw materials from the world's leading suppliers from Europe, South Korea and the United States.
- Product of EU
- Safe nail-beauty sessions for both nail technicians and their clients

*7FREE (does not contain formaldehyde, formaldehyde resins, toluene, dibutyl phthalate, camphor, xylene and ethyltosilamide).*

*Not tested on animals.*

Visit our eShop:  
[SHOP.EMISCHOOL.COM](http://SHOP.EMISCHOOL.COM)



## GEL-POLISH E.MiLac

E.MiLac - the ideal product for creating fashionable decorative coatings:

- formula of enhanced pigment intensity - rich color even in 1 layer;
- self-leveling during application;
- resistant manicure up to 2 weeks;
- polymerizes in UV / LED / CCFL lamps (2 min. / 30 sec.);
- removed with a special liquid Gel and Nail Polish Remover.

6 ml    \*9 ml    \*\*15 ml

001 15 ml ** White Lotus	002 15 ml * French Style	003 ** Pink Cream	004 Mimosa	005 Sunny Day	006 Hawaiian Party	007 Nature of Flame	008 Luxurious Red	009 Flamenco Dancer	010 Coral	011 Strawberry Marmalade	012 Genuine Lady	013 Cappuccino
014 Nutmeg	015 Chocolate Mocco	016 Smokey Eyes	017 Americano	018 15 ml ** Winter Cherry	019 Berry Cocktail	020 Gothic Pink	021 Pink Neon	022 Miss E.Mi	023 Cherry Mousse	024 Blueberry Yogurt	025 Lilac Peony	026 Grape Fresh
027 Purple Glow	028 Twilight	029 Cabernet Bordeaux	030 15 ml ** Black Gloss	031 15 ml * Sky of Stars	032 Indian Sapphire	033 Indigo	034 Turquoise	035 Tiffany Gift	036 Menthol	037 Blue Lagoon	038 Camellia Flower	039 Vanilla Sky
040 Tender Powder	041 English Silk	042 Vintage Mood	043 Pale Rose	044 Bridal Bouquet	048 Bubble Gum	049 Adrenalin	050 Energy Club	051 Laser Lemon	052 Green Absinthe	053 Blue Curacao	054 Euphoria	055 Pink Sands
056 Mystery	057 Aquamarine	058 Green Apple	059 Canotier	060 Peach Echo	061 Flirt	062 Amber Honey	063 Creme Brulee	064 Shy Blush	065 Dusty Cedar	066 Milk Cacao	067 Brownie	068 Sharkskin
069 Ruby Sparkle	070 Red Star	071 Merlot	072 15 ml Imperial Red	073 Raspberry	074 Flawless Red	075 Cardinal	076 Potter's Clay	077 Marsala	078 Dark Wine	079 Crushed Violets	080 Wild Grape	081 Biscay
082 Riverside	083 Open Air	084 Fitness Green	085 Ice Lemon	086 Coraline	087 Streerstyle	088 Vogue	089 Capri	090 Peacock	091 Cruise	092 Passion Flower	093 Shocking Pink	094 Coral Quartz
095 Beige de Neige	096 Nude Look	097 Romantic Pink	098 Provence Blossom	099 Morning Sky	100 Mint Frape	101 Magic Wood	102 Navy Blue	103 Ultramarine	104 Renaissance	105 Touch of Pink	106 Safari Winter	107 Nude Style

108 Star Dust	109 City Lights	110 Champagne Splash	111 Moon Rainbow	112 Shiny Smile	113 Blush Zone	114 Golden Days	115 Burlesque	116 Dark Night	117 Amethyst	118 Day-Dream	119 Firefly	120 Whisper White
121 Evening Shadow	122 Pale Jade	123 Oxford Blue	124 Moon Mist	125 Neutral Gray	126 French Gray	127 Peach Puff	128 Pure Cashmere	129 Savage	157 Golden Diva	158 Diamond Shine	159 Royal Blue	160 Gala Nigh
161 Enigma	162 Magnetism	163 Lipgloss	164 Flame Scarlet	165 Amaranth	166 Bitter Chocolate	167 Malachite	168 Ultramarine Green	169 Military	170 Dark Denim	171 Midnight	172 Parfait	173 Sweet Symphony
174 Barbie Style	175 Sugar Coral	176 Nymph	177 Cream White	178 Cherry Blossom	179 Clouds	180 Mint Milk	181 Spring Greenery	182 Seafoam	183 Aqua Green	184 Red Sand	185 Coral Sunset	186 Hot Girl
187 Strawberry Guava	188 Berry Punch	189 Hibiscus	190 Dragon Fruit	191 Grand Resort	192 Caribbean	193 Aloha	194 Marshmallow	195 Orchid	196 Sweet Lavender	197 Forget-me-not	198 Turquoise Icing	199 Mojito
200 Lemon Sorbet	201 Apricot Pie	202 Cotton Candy	203 Jelly Bean	204 Coco Style	205 Leather Loafers	206 Top Secret	207 Royal Ascot	208 Sauvignon Blanc	209 Buffalo	210 Martini Olive	211 London Morning	212 Blue Blazer
213 Harbor Mist	214 Nude Chic	215 Paris Weekend	216 Friday Set	217 Plan B	218 Long Island	219 Wall Street	220 Miss Bordo	221 Black Jack	222 Ferri Red	223 Moulin rouge	224 Pretty woman	225 Love Story
226 Chicago Spirit	227 Borgia	228 Passion Cherry	229 Manhattan Night	230 Perfect Red	231 Olive Sun	232 Blue Ray	233 Linen Waistcoat	234 Serein Luxur	235 Beige Shine	236 Pink Dreams	237 Black Wood	238 Boho Chic
239 Morocco	240 Turmeric	241 Desert Heart	242 Pocahontas	 <p><b>TOXIC</b></p>	243 Star Trek	244 Deep Purple	245 Malibu	253 Princess Blue	254 Deep Lake	255 Mango Mojito	255 Pink Peacock	
249 Milk Style	250 Tender Style	251 Pink Style	252 Beige Style		246 Vegas	247 Miami	248 Austin Powers	256 Jester Red	257 Brown Granite			

Visit our eShop:  
SHOP.EMISCHOOL.COM

## CAMOUFLAGE BASES



## SET GEL-POLISH STONE MARBLE



## SET GEL-POLISH CELEBRITY



## SET GEL-POLISH HYPE



## BASIC SET GEL-POLISH

FOR CLASSIC AND FRENCH COATING



## SET E.MILAC «FOR FRENCH MANICURE»

2 pcs \*9 ml



- 001 White lotus, fine brush
- 002 French chic
- Stencils for the French manicure

## SET COMBI-MANICURE



## SET COMBI-PEDICURE



BASE AND TOP GEL-POLISH

<b>Base Gel</b> Base coat	<b>Sculpt-Medium Base Gel</b> Basic coverage average degree viscosities	<b>Sculpt-Maxi Base Gel</b> Basic coverage high degree viscosities	<b>Top Gel</b> Protective coating with sticky layer	<b>Top Gel Tackless</b> Protective coating without the adhesive layer	<b>Slider Top Gel</b> Protective coating for sliders

<b>Ultra Shine Top gel</b>	<b>Matt Top Gel</b> Matt protective cover	<b>Velur Matt Top Gel</b> Protective coating the effect of velour	<b>Easy Soak Off Base Gel</b> Easily removable basic coverage	<b>Easy Soak Off Top Gel</b> Easily removable protective coating	<b>Nail Polymer Booster</b> Polymer for recovery	<b>Nail Strengtheners</b> Natural Force	<b>Antifungal</b> Antifungal agent

ADDITIONAL MATERIALS

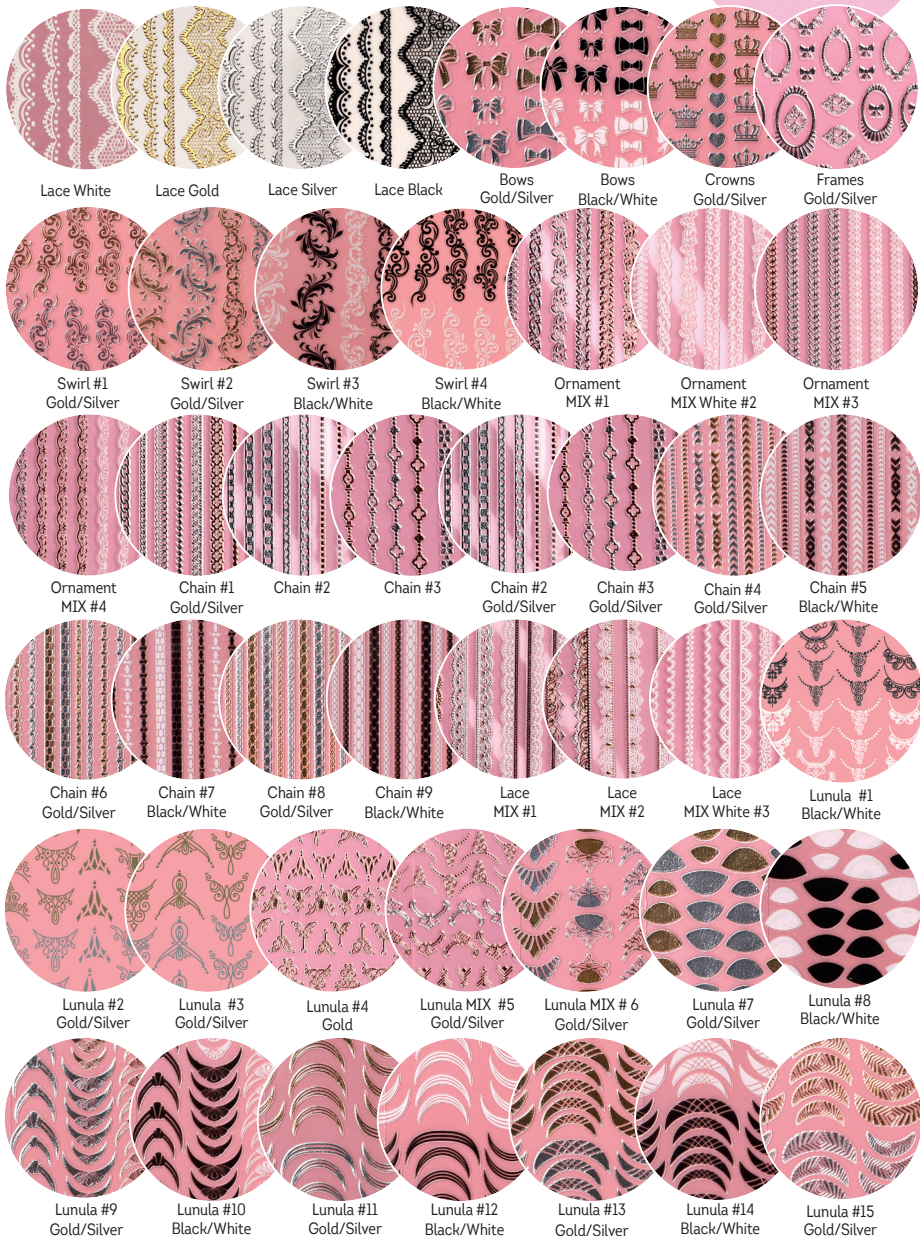
<b>Cuticle Oil Aqua Dream</b>	<b>Cuticle Oil Glamour Look</b>	<b>Cuticle Oil Barbie Girl</b>	<b>Protect Oil</b> Antiseptic cuticle oil	<b>Cuticle Remover</b> Means to remove the cuticle

<b>Nail Prep Aid</b> Removes excess moisture and oils	<b>Ultrabond</b> Primer for adhesion of the artificial coating to the nail plate	<b>EUROCLEANSER LUX</b> Dehydrator of nail plate and remover of tack layer	<b>CLEANSING SPRAY</b>
		<b>GEL AND NAIL POLISH REMOVER</b> Liquid for removal lacquer and gel polish	

## CHARMICON 3D SILICONE STICKERS

Stylish accessories for true fashionistas.

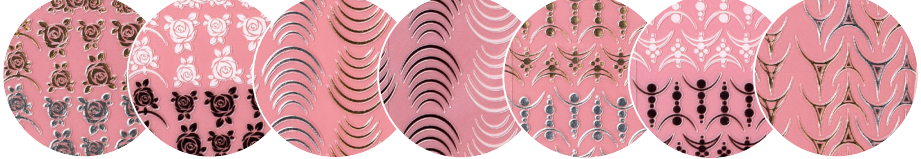
- Elegant details on your nails – gorgeous patterns, openwork lace, original designs, stylish elements such as bows and crowns.
- Easy to use! Charmicon is ready-to-use product. Apply it to prepared nails and cover them with E.MiLac Top Gel on natural nails and Finish Gel on artificial nails.
- The wide range of Charmicon makes it possible to realize the most interesting ideas of nail-master.



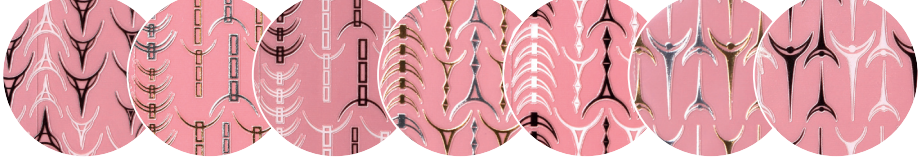




Lunula #16 Black/White  
 Lunula #17 Gold/Silver  
 Lunula #18 Black/White  
 Lunula #19 Gold/Silver  
 Lunula #20 Black/White  
 Lunula #21 Gold/Silver  
 Lunula #22 Black/White



Lunula MIX #23 Gold/Silver  
 Lunula MIX #24 Black/White  
 Lunula #25 Gold/Silver  
 Lunula #26 Black/White  
 Lunula #27 Gold/Silver  
 Lunula #28 Black/White  
 Lunula #29 Gold/Silver



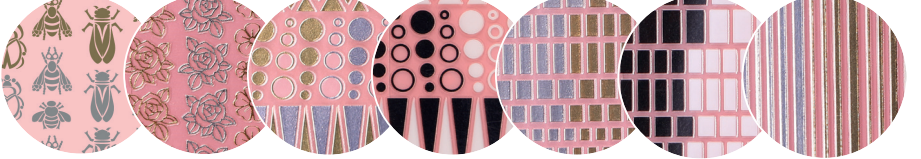
Lunula #30 Black/White  
 Lunula #31 Gold/Silver  
 Lunula #32 Black/White  
 Lunula #33 Gold/Silver  
 Lunula #34 Black/White  
 Lunula #35 Gold/Silver  
 Lunula #36 Black/White



Locks Gold/Silver  
 Locks MIX #1 Gold/Silver  
 Stars MIX #1 Gold/Silver  
 Stars MIX #2 Black/White  
 Love MIX Gold/Silver  
 Rock MIX Gold/Silver  
 Jewelry #1 Gold/Silver



Jewelry #2 Gold/Silver  
 Jewelry Silver #2  
 Jewelry #3 Gold/Silver  
 Jewelry #4 Gold/Silver  
 Jewelry #5 Gold  
 Jewelry Silver #5  
 Insects Gold/Silver



Insects #2 Gold/Silver  
 Flowers MIX #1 Gold/Silver  
 Geometry #37 Gold/Silver  
 Geometry #38 Black/White  
 Geometry #39 Gold/Silver  
 Geometry #40 Black/White  
 Lines #41 Gold/Silver



Lines #42 Black/White  
 Berries #43 Gold/Silver  
 Berries #44 Black/White  
 Tropical Fruits #45 Gold/Silver  
 Tropical Fruits #46 Black/White  
 Fish #47 Gold/Silver  
 Fish #48 Black/White

Visit our eShop:  
[SHOP.EMISCHOOL.COM](http://SHOP.EMISCHOOL.COM)



Cruise #49  
Gold/Silver

Cruise #50  
Black/White

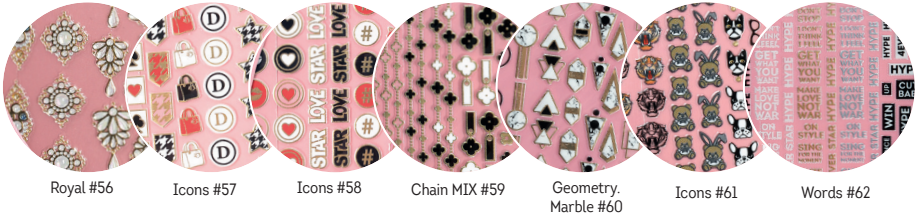
Words #51  
Gold/Silver

Words #52  
Black/White

Square #53  
Gold/Silver

Roya #54

Royal #55



Royal #56

Icons #57

Icons #58

Chain MIX #59

Geometry.  
Marble #60

Icons #61

Words #62



Belts #63

Icons #64

Leaves #65

Leaves #66

Animals.  
Graphics #73

Animals.  
Graphics #74

Swirl #75



Swirl #76

Chain #77

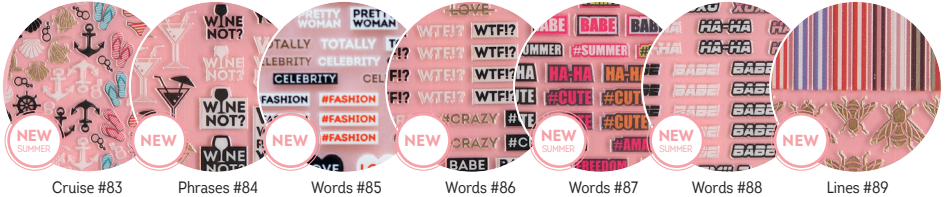
Chain #78

Fruits #79

Summer Time #80

Cupcakes #81

Tropics #82



Cruise #83

Phrases #84

Words #85

Words #86

Words #87

Words #88

Lines #89

CHARMICON CHIC 5D SILICONE STICKERS



#1

#2

#3

#4

#5

#6

#7

#8

#9

#10

# NAILDRESS SLIDER DESIGN

Sliders designed for use with «Velvet Sand», «Liquid Stones» gel and EMPASTA with foil

- The genius is always simple! No need to cut out the design with scissors - the excessive transparent film can be easily removed with Ultrabond.
- A great variety of prints and designs, following the most sought-after trends
- Fashion Nail Look - the decorative sliders designed upon the author's request, reflecting the trends of the leading designers' latest collections.
- Sophisticated E.Mi-manicure in just a few minutes! The Naildress sliders considerably save time and optimize a nail artist's work!



\*Vintage      \*Majolica      \*Flowers of India      \*Patchwork      \*Persian Scarf      \*Victorian Era

\*\*Jacquard      \*\*Bridal Roses      Tender Roses      Peach Roses      \*\*English Roses      \*\*Cruise

\*\*Roman Holiday      Pajama Party      Spring Bouquet      Retromobiles      Red Silk      Tropic

Banana Leaves      Cats      Smoky Cage      Japanese Chrysanthemum      Gray Zigzag      Victorian Roses

Leopard      Knitted Manicure      Houndstooth      Norwegian Pattern      Pop Art #3      Cosmetics #4

Fashion #5      \*\*Citrus #7      \*\*Fish #9      Lady in Red #11      E.Mi print #12      Luxury print #13

Visit our eShop:  
[SHOP.EMISCHOOL.COM](http://SHOP.EMISCHOOL.COM)



Zebra #14      Graphic art #15      Drop #17      Autumn #18      Brown marble #19      White marble #20



Geometry #21      Geometry #22      Fashion Lady #23      Fashion Lady #24      Versailles      Butterflies #6



Berries #8      Christmas Piggy #25      Jeans #29      Classic Prints #30      Wildflowers #31      Tropical Sunset #32



Tropical Print #33      Flamingo #34      Abstraction #35      Geometry #36      Watercolor Flowers #37      Chess #38

NAILDRESS  
PRO GEMTY GEL



English Silver      Purple Silk      Wedding Rose      Gold Cloth

NAILCRUST 5D



#1 Swirls 5D      #2 Abstraction 5D      #3 Texture 5D      #4 Flowers      #5 Flowers      #6 Flowers      #7 Flowers

## NAILCRUST PATTERN SLIDERS

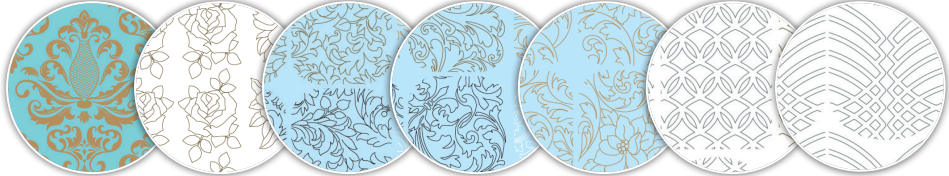
- Must-have of the demanded nail-master! Modelling flowers became easy even for beginning nail-masters. Now it's possible to create complicated texture bas-relief manicure on the nails
- The wide range of patterns provides endless opportunities for nail-masters
- NAILCRUST Pattern Sliders are claimed to simplify the process of the procedure.



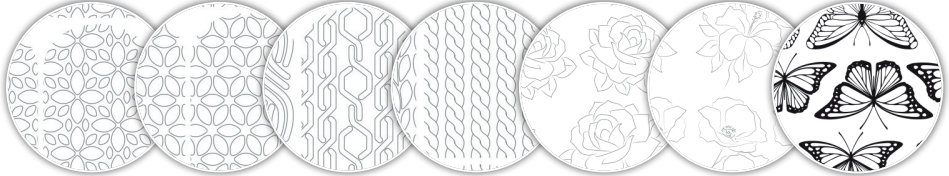
#1 ● #2 ● #3 ● ○ #4 ● ● ○ #5 ● ● ○ #6 ● ● ○ #7 ● ● #8 ● ○



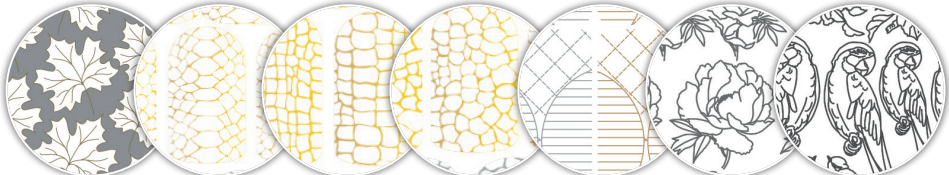
#9 ● ● ○ #10 ● #12 ● #16 ● ● #17 ● ● #18 ● ● #19 ● ●



#20 ● ● #22 ● #23 ● #24 ● #25 ● Fleur #26 ● Plaiting #27 ●



Flower Garden #28 ● Petals #29 ● Knitting Patterns #30 ● Braids #31 ● Roses #32 ● Flowers MIX #33 ● Butterfly #34 ●



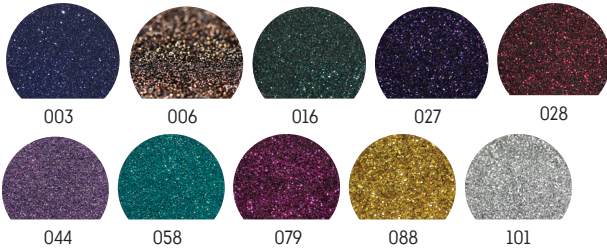
Leaves #35 ● Reptile #1 ● Reptile #2 ● Reptile #3 ● Quilted Manicure ● Flowers MIX 2 #37 ● Birds #38 ●



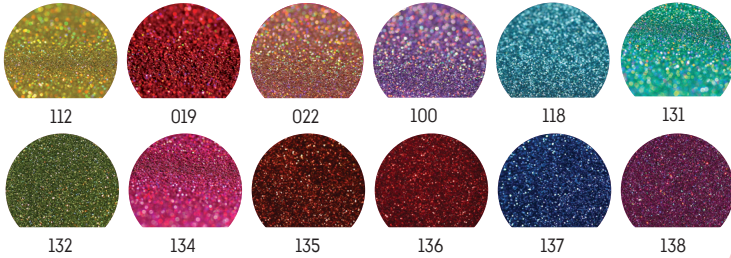
Gold #39 ● Silver #40 ● One Love #41 ● Abstraction #42 ● Geometry #43 ● Disco #44 ● Dolls #45 ●

Visit our eShop:  
[SHOP.EMISCHOOL.COM](http://SHOP.EMISCHOOL.COM)

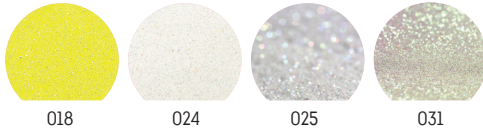
ONE COLOR METALLIC DUST



HOLOGRAPHIC DUST



SEMITRANSSPARENT DUST

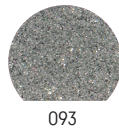


ACRYLIC  
POWDER

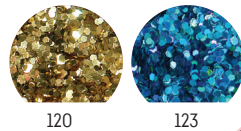


DUST FOR MIXED  
APPLICATION

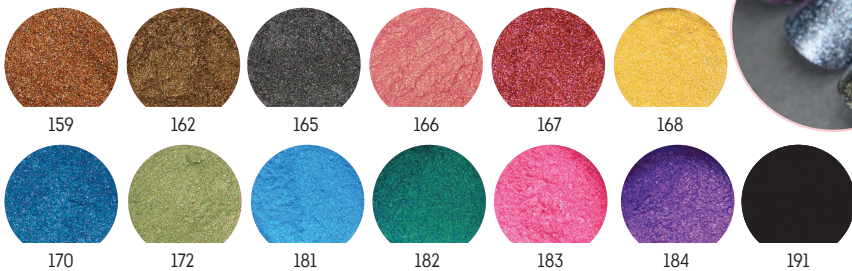
used in combination  
with the Dust #001 size



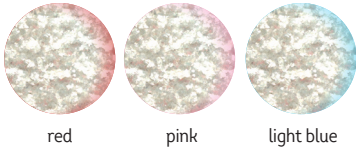
CONFETTI



SOLID PIGMENT



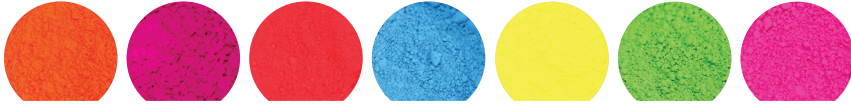
LIQUID MICA



red pink light blue

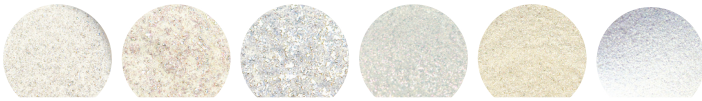


NEON PIGMENT  
for color intensity



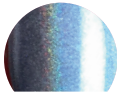
177 178 179 180 185 186 190

SEMITRANSSPARENT PIGMENT



154 156 157 158 174 175

PIGMENT PRISM



197

PIGMENT BRILLIANT



198

PIGMENT ULTRA GOLD



199

PIGMENT GOLD



203



PIGMENT CHAMELEON



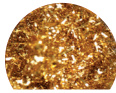
192 193 194 196 200 201 202

PIGMENT MERMAID TAIL



204

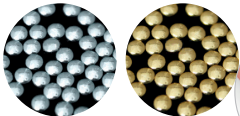
PIGMENT GOLDEN SHAVINGS



205



NAIL STUDS



Nail Stud Silver 2 mm Nail Stud Gold 2 mm



METALLIZED STICKER TAPE



Silver Gold

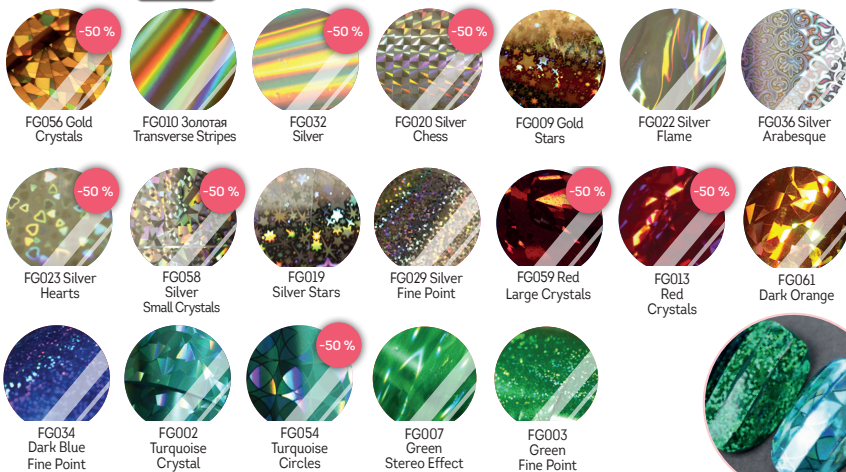
GLOSSY FOIL

1.5 m



1.5 m

HOLOGRAPHIC FOIL



RHINESTONES



- Holographic #3
- Holographic #4
- Holographic #6
- Brilliant #3
- Brilliant #4
- Brilliant #6
- White opal #3
- White opal #4
- White opal #6
- Light pink #3
- Light pink #4
- Light pink #6
- Chameleon #3
- Chameleon #4
- Chameleon #6

50 pcs

500 pcs

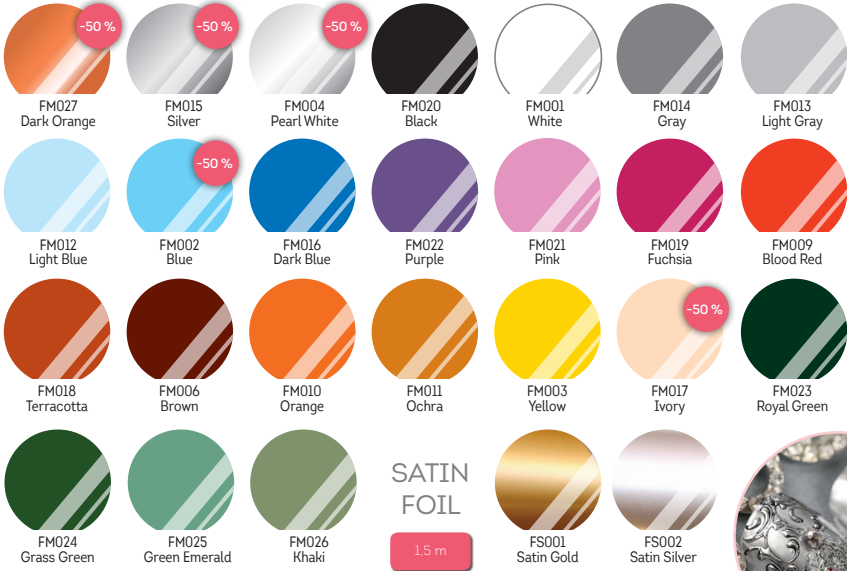
50 pcs





MATTE FOIL

1.5 m



SATIN FOIL

1.5 m



DECOUPAGE STICKERS

ONE PACKAGE CONTAINS  
ONE COLLECTION OF 80 STICKERS  
to create brooches in author's technique  
Moulding Modeling®

80 pcs



8x12 mm  
40 pcs



6x9 mm  
40 pcs

Angels



Cameo



Zhostovo



Roses #1



Roses #3



Flowers #2



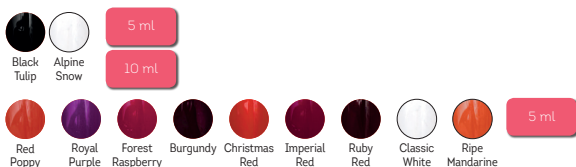
Flowers #3



## GEL PAINTS & EMPASTA



### COLLECTION CLASSIC



Set The Power of The Red



### PEARL COLORS



### BLOOMING LIFE



### GRAND RESORT



### STONE MARBLE



Set Blooming Life



Set Grand Resort



Set Stone Marble

### CELEBRITY



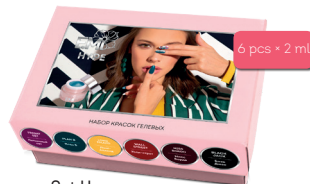
Set Celebrity

### SUPER STAR



Set Super Star

### HYPE



Set Hype

NEON

5 ml



6 pcs + 5 ml



Set Neon 2.0

COZY EVENING

5 ml

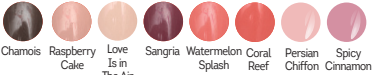
6 pcs + 5 ml



NUDE CASHMERE

5 ml

10 pcs + 5 ml



OCEAN SOUL

5 ml

10 pcs + 5 ml



PASTEL RINGS!

5 ml



10 pcs + 2 ml



Gel paints set Pastel Rings! 2.0

GLAM LADY

5 ml



10 pcs + 5 ml



Gel paints set Glam Lady

CITY WOMAN



5 ml

6 pcs + 2 ml



Set City Woman 2.0

SEASON OF CONTRAST



5 ml

6 pcs + 5 ml



Set Season of Contrast

ROYAL TONE



5 ml

6 pcs + 5 ml



Set EMPASTA Fashion Texture Royal Tone



5 ml

6 pcs + 5 ml



Set EMPASTA Fashion Texture



EMPASTA Fashion Texture Winter Collection 2.0



EMPASTA Royal Tone

### SPORT CHIC



Set Sport Chic 2.0



Set EMPASTA Fashion Texture Sport Chic

### TROPICAL GARDEN



Set Tropical Garden 2.0



Set EMPASTA Fashion Texture Tropical Garden

### TOTAL GRAY



Set Total Gray



Set EMPASTA Fashion Texture Total Gray

### GLOSSEMI



Gel paints collection for foil imprinting



White Platinum is used for mixing with other glossemi colours to imprint foil of light shades



Kit GLOSSEMI



Set Confetti



### THICK EMPASTA WHITE DECOR



GET HIGHER, MORE VOLUMINOUS DESIGNS



Set Perfect casting

- Brush Linear #5/0 (white synthetics),
- Gel paint Black Tulip, 5 g
- Glossy foil 6 pcs x 1,5 m



2 STEP-BY-STEP GUIDES

### EMPASTA FOR MOULDING MODELLING



Openwork Silver



Baroque Gold

### SPIDER GEL



Black

White

## GEMTY GEL DECORATIVE GEL WITHOUT STICKY LAYER

**5 ml**



Pearl Ruby

**8 pcs × 5 ml**



**Set Gemty Gel**



Citrine Turquoise Tourmaline Sapphire Emerald Obsidian

**6 pcs × 2 ml**



**Set Gemty Basic  
6 base colors**

**2 ml**



White Black Blue Magenta Red Yellow

## GEMTY CLEAR

**2 ml**




## TEXTONE

UV metallic effect paints set

**2 pcs × 15 ml**

**5 pcs × 15 ml**

**15 ml**

**10 STEP-BY-STEP GUIDES**



Silver Gold Black Silver Blue Magenta Gold

## SET LIQUID STONES AND VELVET SAND

## PRINCOT GEL

**10 ml**

**10 ml**



**Polymer Liquid Stones**

**Gel Liquid Stones**

**Set Velvet Sand**

- E.Mi Velvet Sand, 30 g;
- Nailbrush;
- Branded E.Mi palette.



**Set Liquid stones and velvet sand**

- Liquid Stones Gel, 10 ml;
- E.Mi Velvet Sand, 60 g;
- Nailbrush;
- Branded E.Mi palette.

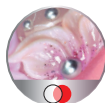
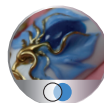


**5 ml**



## PLASTICINE

FOR MODELING  
Versatile color - white



white plasticine + EMPASTA

2 ml

5 ml

15 ml



**Step 1.**  
Color coat

**Step 2.**  
Top coat

## E.MiLac Nail Polish Gel Effect

Flawless professional coat; this product combines the best of nail polish and gel polish and does not require use of a lamp or soaking.

- Two-phase system - ULTRA STRONG E.MiLac GEL
- EFFECT + ULTRA STRONG TOP COAT:
- Everlasting shine system activated by the sun. The UV polymer contained in the nail polish and the photoinitiator in the top coat react together, safely interacting with daylight and making the coat even stronger every day.
- Perfect gel effect in just 10 minutes, with no need for a lamp.
- Firm, crack and fracture free coat that lasts 10 days.
- Quick and easy application.

6 ml  
9 ml

001 Snow White	002 Misty Pink	003 Perfect Beige	004 Cloud Dancer	005 Antique White	006 Macadamia	007 Ecru	008 Linen	009 Classic Beige	010 Toasted Almond Maple	011 Sugar	012 Sepia	013 Coffee Liqueur
014 Wenge	015 Mahogany	016 Marsala	017 Rose Tan	018 Rose Quarz	019 Strawberry Cream	020 Morning Glory	021 Marshmallow	022 Candy Pink	023 Fuchsia	024 Sweet Plum	025 Blackberry	026 Twilight
027 Burgundy Wine	028 Beaujolais	029 Imperial Red	030 Flawless Red	031 Barberry	032 Raspberry Red	033 Berry Cocktail	034 Lollipop	035 Cardinal	036 Tigerlily	037 Grenadine	038 Buttercup	039 Green Flash
040 Biscay Bay	041 True Blue	042 Provence	043 Cornflower	044 Arctic Ice	045 Serenity	046 Lavender	047 Grape Shake	048 Violet	049 Black Grape	050 Little Black Dress	051 Bermuda	052 Lime
053 Lemon Tonic	054 Papaya Punch	055 Exotic Pink	056 Oleander	057 Tangerine Tango	058 Aquamarine	059 Whisper White	060 Evening Shadow	061 Pale Jade	062 Oxford Blue	063 Moon Mist	064 Neutral Gray	065 French Gray
066 Peach Puff	067 Pure Cashmere	068 Savage	069 Golden Diva	070 Diamond Shine	071 Royal Blue	072 Gala Nigh	073 Enigma	074 Magnetism	075 Lipgloss	076 Flame Scarlet	077 Amaranth	078 Bitter Chocolate
079 Malachite	080 Ultramarine Green	081 Military	082 Dark Denim	083 Midnight	084 Parfait	085 Sweet Symphony	086 Barbie Style	087 Sugar Coral	088 Nymph	089 Cream White	090 Cherry Blossom	091 Clouds



NAIL POLISH SETS E.MiLac GEL EFFECT

Nail-capsule: color + fashion sticker



Visit our eShop:  
[SHOP.EMISCHOOL.COM](http://SHOP.EMISCHOOL.COM)

## E.Mi GEL SYSTEM

### E.Mi GEL SYSTEM 3.0

includes:

- Super Bond Gel, 15 ml
- Brilliant Finish Gel, 15 ml
- Easy One Gel, 5 g
- Natural Composite Gel, 5 g
- Soft Nude Gel, 5 g
- Soft Pink Gel, 5 g
- Ultrabond, 9 ml
- Nail Prep Aid, 9 ml
- Brush Oval #6
- Brush Leaf #6
- Nail Forms Single Use E.Mi 30 pcs
- Nail File Pink 180/240
- Nail File Zebra Oval 100/180
- Nail File Zebra Standard 100/180
- Nail Soft File 100/180
- Nail Brush E.Mi
- Nail Brush E.Mi
- Mini-book E.Mi GEL SYSTEM



## CLEANING PRODUCTS



### EUROCLEANSER LUX

Degreases the nail plate; removes the sticky layer

200 ml

1000 ml



### CLEANSING SPRAY

200 ml

1000 ml



9 ml

15 ml

100 ml

### NAIL PREP AID

- completely removes any excessive humidity and naturally occurring oils to ensure better adhesion;
- only penetrates the outer layers of the nail plate, preserving the nail's natural structure and thickness.

## PRIMER AND BASE GEL



9 ml

15 ml

100 ml

### ULTRABOND

A primer to ensure adhesion between the artificial coat and the nail plate, designed for use with GEL, ACRYLIC AND SOAK-OFF SYSTEMS



15 g

100 ml

### SUPER BOND GEL

Acid-free base gel with enhanced adhesion formula.

## SCULPTURE GELS



5 g

15 g

50 g

### ACRYGEL

Acrygel = best properties of both acryl + gel

NEW

NEW

NEW

NEW

NEW

NEW

NEW

NEW

NEW

NEW

NEW

NEW

NEW

NEW

NEW

NEW

NEW

NEW

NEW

### ACRYGEL CLEAR

Acrygel = best properties of both acryl + gel. Clear



5 g

15 g

50 g

100 g

15 ml

LOW VISCOSITY

5 g

15 g

50 g

100 g

### EASY ONE GEL

Single-phase transparent sculpting 3 in 1 gel (base, sculpting, top coat)

### MONOPHASE LED GEL

Universal sculpting monophase LED gel





**SOFT PINK GEL**

Single-phase camouflaging sculpting gel tender pink colour



**SOFT NUDE GEL**

Single-phase camouflaging sculpting gel a natural nude colour



**SOFT MILK GEL**

One-phase sculpting camouflagé gel an elegant milky shade



**COMPOSITE GEL**

Special gel for sealing the nail's free edge during nail strengthening



**NATURAL COMPOSITE GEL**

Multifunctional 2 in 1 sculpting gel for sculpting on forms and sealing/repairing



**SOFT PINK JELLY GEL**

Camouflage jelly for gel French manicure



**FORM GEL NATURAL**

Sculpting gel for resaturation and extension of free edges and for natural-looking sculpting



**FORM GEL CLEAR**

Transparent sculpting gel for sculpting using nail form



**FORM GEL ULTRA WHITE**

Ultra white gel for creating French manicure using nail forms



**BRILLIANT FINISH GEL**

Protective finishing gel with residual tack:  
 • flawless shine;  
 • sets perfectly in just 1 minute



**FINISH MATTE GEL**

Protective finishing gel with matte effect

**FINISH GELS**

**SCULPTING TOOLS**

**Nail Forms Single Use E.Mi**  
Perfect for arch sculpting

**Fiberglass for nail plate repair**

**Fiberglass for artificial nail plate repair**



**Sanding Block Pink**



**Nail File Pink 180/240**  
for natural nails



**Nail File Ultra Shine 400/4000**  
for natural nails



**Nail File White 100/180**  
for artificial nails



**Nail File Zebra Standard 100/180**



**Nail File Zebra Oval 100/180**



**Nail File Zebra Maxi 100/180**



**Soft File 100/180**



**Soft File 220/280**

## PROFESSIONAL MIX CCFL/LED LAMP 30W

- Output power: 36W
- A special button to dry the base gel
- 18 LED-lamps



Tips «Almond»  
#0, 1, 2, 3, 4, 5, 5.5,  
6, 6.5, 7, 8, 9



Tips for Nail Design  
Pink #1



Pink Tips  
for Nail Design  
Oval #2



Pink Tips for Nail Design Oval  
# 0, 1, 2, 3, 4, 5, 5.5,  
6, 6.5, 7, 8, 9



Glue  
for tips

## ROTARY FILE

Corn-shaped Ceramic Rotary File, 6 mm.  
Abrasiveness Fine

Corn-shaped Carbide Rotary File, 6 mm.  
Abrasiveness Medium

Drop-shaped diamond coated rotary file, 2.7  
mm. Abrasiveness Medium

Drop-shaped diamond coated rotary file, 2.7  
mm. Abrasiveness Fine

Needle cone-shaped diamond coated rotary  
file, 1.4 mm. Abrasiveness Medium

Rounded cone-shaped diamond coated rotary  
file, 3 mm. Abrasiveness Medium

Rounded cone-shaped diamond coated rotary  
file, 2.3 mm. Abrasiveness Medium

Safe Rotary File has no abrasiveness  
and cutting notches.

Ball-Shaped Diamond Coated Rotary File,  
3 mm. Medium abrasiveness

Ball-Shaped Diamond Coated Rotary File,  
4 mm. Fine abrasiveness



## KERATOLYTIC



**Alkaline keratolytic**

- careful removal of rough skin;
- the nail drill machine does not heat up the foot skin thanks to an instant action;
- great for both classic and hardware pedicure. Considerably saves the time.



**Acid-based alkaline keratolytic**

- the citric, tartaric and lactic acids produce a gentle softening effect, efficiently destroying the dead skin cells;
- lactic acid retains moisture in the epidermal layers, increasing the elasticity and smoothness of the skin;
- packaging with dispenser provides an economical consumption.



**Urea-based keratolytic**

- carbamide gently and effectively softens rough skin and keep the feet moisturized and supple long after the procedure;
- helping reduce dryness and hyperkeratosis and preventing the sensitive skin on the feet from cracking in patients with diabetes.

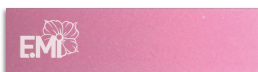
## SCULPTING TOOLS



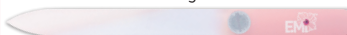
White Nail File 100/180  
for artificial nails



Pink Nail File 180/240  
for natural nails



Pink Sanding Block



Crystal Nail File E.Mi



Mini Wood Nail File 180/220



Stainless Steel  
Pedicure File

180 grit

10 pcs

80 grit

10 pcs

Nail sandpapers



Metal case for tools and brushes - sturdy, trendy and handy



2.5 g

Acrylic powder for nail repair and reinforcement



Tips Stickers for each collection



Nail Art Mat 30x40 cm, for nail masters



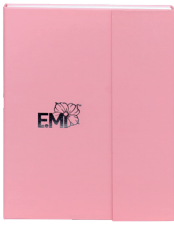
Clutch bag for brushes and tools



black Water-based paint



Nail Display Wheel



Nail Design Book Chart E.Mi

Notebook-planning for masters E.Mi



Nail Display Tips Sticks with Chain



Magnet - for magnetic E.MiLac



Palette for Gel Paints

Caps for the gel paints



10 pcs



Tube Squeezer



Nail Stick

10 pcs

1 pcs

E.Mi Wet Cleansing Wipes, 100 pcs



Nail Brush



Nail Wipes Lint Free 1000 pcs.

## BRUSHES FOR NAIL DESIGN

**KL-5/0 Linear #5/0**

Synthetic fiber, transparent base.  
The brush is used for applying lines of nail design.

**KZL-5/0 Brush Linear #5/0**

White synthetic fiber. The brush is used for applying lines of nail design. Recommended for beginners.

**KZM-0 Perfect Stroke #0**

The brush is used for underpainting, dots and wide strokes.

**KZM-2 Perfect Stroke #2**

The brush is used for underpainting, dots and wide strokes.

**KM-3 Stroke #3**

Red sable brush is used for underpainting.

**KSKF-1 Brush Ideal French****KD01 Dots #1**

Dotting tool.

**KD02 Dots #2**

Dotting tool.

**KOB-4 Ombre #4**

Flat brush, golden brown color, Torey, with cut-out hair for Ombre (gradient) technique.

**KC-4 Square #4**

Flat brush, golden brown color, Torey. The brush is used for French manicure, color tinting and modeling artificial nails.

**KC-6 Square #6**

Flat brush, golden brown color, Torey. The brush is used for French manicure, color tinting and modeling artificial nails.

**KLE-2 Leaf #2**

Cat's Tongue brush, golden color, Torey. The brush is used for decorative strokes and gel sculpting.

**KLE-4 Leaf #4**

Golden color, Torey. The brush is used for decorative strokes and gel sculpting.

**KLE-6 Leaf #6**

Golden color, Torey. The brush is used for decorative strokes and gel sculpting.

**KSKF-4 Beveled Square for French Manicure #4**

Angle brush, golden color, Torey. The brush is used for French manicure and color tinting.

**KSKF-6 Beveled Square for French Manicure #6**

Angle brush, golden color, Torey. The brush is used for French manicure and color tinting.

**KZO-0/0 Oval for Zhostovo #0/0**

Brush is used for Zhostovo painting.

**KZO-3/0 Oval for Zhostovo #3/0** (grey synthetic). Brush is used for Zhostovo painting.

**KZO-1 Oval for Zhostovo #1**  
Brush is used for Zhostovo painting.

**KZLE-1 Leaf for Zhostovo #1**  
Brush is used for Zhostovo painting.

**KSKK-2 Beveled Square for One Stroke #2**  
Flat wide brush, angle, red wine color, Torey.  
The brush is designed for a One Stroke painting.

**KSKK-4 Beveled Square for One Stroke #4**  
Flat wide brush, angle, red wine color, Torey.  
The brush is designed for a One Stroke painting.

**KO-4 Oval #4**  
Brush of red wine color, Torey. The brush is used for underpainting and gel modeling.

**KO-6 Oval #6**  
Brush of red wine color, Torey. The brush is used for underpainting and gel modeling.

**KV-5/0 Perfect Lock #5/0**  
Round brush, selected fur of Siberian Weasel.  
The brush is used for applying lines of nail design and contour drawing.

**KN Brush Needle**  
The brush is used for fiberglass work, e.g. repairing natural or artificial nails.

### SET OF BRUSHES E.MI DESIGN TECHNOLOGIES

- KZL-5/0 Linear #5/0
- KZO-0/0 Oval #0/0
- KZM-0 Perfect Stroke No 0
- KSKF-6 Beveled Square for French Manicure #6
- KO-6 Oval #6
- KV-3/0 Perfect Lock #3/0

### SET OF BRUSHES FOR ONE STROKE PAINTING

- KSKF-4 Beveled Square for French Manicure #4
- KSKK-4 Beveled Square for One Stroke #4
- KSKK-2 Beveled Square for One Stroke #2

### SET OF BRUSHES FOR ZHOSTOVO PAINTING

- KZO-0/0 Brush Oval for Zhostovo #0/0
- KZO-3/0 Brush Oval #3/0 (Grey synthetic)
- KZO-1 Brush Oval for Zhostovo #1
- KZLE-1 Brush Leaf for Zhostovo #1





DISPLAYS AND ORGANIZERS

Display E.MiLac  
50 colours



Display E.MiLac Nail Polish  
Gel Effect 50 colours



Day planner



grey

pink

Desktop Card Holder E.Mi



Leather cover  
passport E.Mi

Notebook-planning  
for masters E.Mi



Nail Master  
Uniform #EMIMAN-  
ICURE  
size S, M, L



TEXTILE PRODUCTS

Apron  
pink, grey

Polo t-shirt with  
logo E.Mi,  
S, M, L, XL

Towel bicolour E.Mi-man-  
icure



Branded pillow E.Mi



NAIL-ART CATALOGUES



Digest Catalogue  
E.Mi-manicure, second edition



Digest Catalogue  
E.Mi-manicure, Autumn/Winter 2018/19



Digest Catalogue  
E.Mi-manicure, Spring/Summer 2019

NAIL-ART CATALOGUES

Sealing of Natural Nails  
During Correction

This manual will teach you a technique that will allow you to sculpt artificial nails on the natural frame of the nail plate: the resulting nails are narrow, thin, strong and have a natural look. An illustrated, step by step tutorial gives you an opportunity to try reproducing this technique by yourself.



100 step-by-step guides



## MANICURE AND PEDICURE STUDY PROGRAMS

## Manicure Technician

🕒 2 weeks



The elementary training representing the basis of the manicurist's skills. You will be able to start working in a beauty salon straight after completing the course. The course will teach you:

- Traditional manicure (with cuticle trimming);
- European manicure (with cuticle pushed back);
- Mixed manicure;
- Male manicure;
- Manicure for children;
- SPA-manicure;
- Paraffin therapy;
- Hand massage;
- Traditional coating and French coating using gel polish and normal polish

The course covers:

- Study of skin and nail anatomy and physiology, study of dermal and nail diseases;
- Materiology
- Principles of disinfection and sterilization, Health Inspection Service requirements, business culture of and communication, modern technologies used in manicure.

## Pedicure Technician

🕒 2 weeks



The elementary training representing the basis of the nail master's skills. You will be able to start working in a beauty salon straight after completing the course. The course will teach you:

- Traditional pedicure (with cuticle trimming);
- European pedicure (with cuticle pushed back);
- Mixed pedicure;
- SPA-pedicure;
- Paraffin therapy;
- Ingrown nail correction;
- Massage;
- Traditional coating and French coating using gel polish and normal polish.

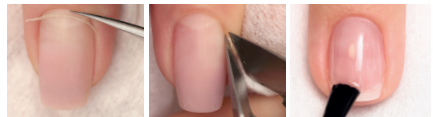
## ADVANCED COURSES

## Modern Manicure Techniques

🕒 3-10 days

You will learn about the latest trends in manicure: modern traditional manicure, European manicure (with cuticle pushed back), mixed manicure, "hot", SPA-manicure, paraffin therapy, traditional and French coating, hardware manicure.

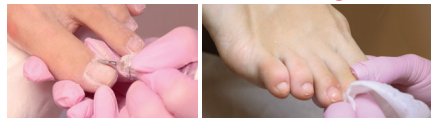
Improve your competitiveness by improving your skills!



## Modern Pedicure Techniques

🕒 2-10 days

Experienced and highly qualified trainers will teach you: traditional pedicure (with cuticle trimmed), european pedicure (with cuticle pushed back), mixed pedicure, SPA-pedicure, paraffin therapy, ingrown nail correction, massage, traditional and French coating.



## COMBI-Manicure with E.MiLac

🕒 1 day


The course includes theory and practice of hardware/mixed manicure and all types of coating using normal polishes and gel polishes: traditional, French, lunar manicure, RUFFIAN, OMBRE and gradient by E.MiLac.





## NAIL SCULPTING COURSES

### Nail modeling using Gel/Gel polish

 3 days, 5 days, 10 days



The course covers all techniques for nail strengthening, combining gel with gel polish. The course includes:

- hardware and mixed manicure;
- nail strengthening using gel, gel polish, sealing;
- levelling out and sculpting using gel, WITHOUT FILING;
- achieving perfect shine;
- all types of E.MiLac coats applied "under" the cuticle: traditional, OMBRE, Lunar manicure, French, RUFFIAN.

The COMBI-STYLE is a personalised approach for every client - fast, tried and tested, with perfect results. No chips, cracks or peeling.

### Pipe Nails Modeling

 2 days



The architecture of competition nails amazes with the beauty and precision of their shape and their arch bend (40-50%). This course will teach you how to create such nails using salon sculpting techniques, while maintaining the maximum strength in the nails' stress zone and sides.

You will learn how to sculpt beautiful, graceful and strong nails of the traditional, square and elegant PIPE shapes.

### Unusual shapes in nail modeling

 2 days

This course will teach you advanced, complex techniques of sculpting artificial nails into non-traditional shapes - Edge, Bridge and Modern. These nails have an uncommon shape and are very strong - a quality that modern women value highly. The sculpting is performed using the professional E.Mi Gel System.



### Competitive modeling training


 2 days

The training center carries out individual and group basic trainings on the competition manicure, nail extension and design.

The graduates are the multiple prize winners and winners of the regional and national championships. All the teachers are the participants and multiple prize winners, and the winners of the national championships (EXPO BEAUTY, NAIL EXPO, World Of Beauty).



### Internship in nail modeling

 1-5 days

Anyone can take this training after finishing any course on modeling or manicure. This training is aimed to additional practice of all studied technologies: timing problem, quality of

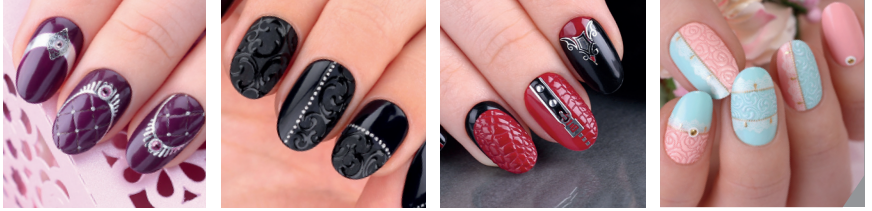
service, material overspending. All materials and models are presented by the Training Centre.

NAIL DESIGN STUDY PROGRAMS

I LEVEL

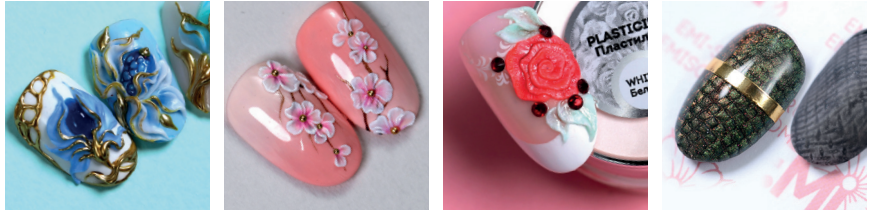
Art Painting, Basic Course

🕒 2 days



Plasticine Molding, Basic Course

🕒 2 days



II LEVEL

Stylized Art Painting, 2 level

🕒 2 days



3d Design, Sophisticated Bas-Relief

🕒 2 days



## NAIL DESIGN STUDY PROGRAMS

### III LEVEL

#### Pattern Watercolor

 1 days



#### One-Stroke Painting

 2 days



#### Zhostovo Painting

 2 days



COURSE SCHEDULE AND ONLINE REGISTRATION AT

**EMISCHOOL.COM**

# COST OF PROCEDURES

## ONE-COLOUR COATING WITH E.MILAC GEL EFFECT: 15-20 MINUTES

Product Name	Price	Volume	Price	Volume	Price	Volume	Consumption, ml per one nail	Cost per 1 nail liquid 6 ml	Cost per 1 nail liquid 9 ml	Cost per 1 nail liquid 100 ml
Ultra Strong Gel Effect	4	6	6	9	6	9	0.02	0.01	0.01	0.013
Ultra Strong Top Coat Gel Effect	6	9	30,2	9	30,2	100	0.015	0,01	0,05	0,005
								<b>0.02</b>	<b>0.06</b>	<b>0.018</b>

## ONE-COLOUR COATING WITH E.MILAC: 20-30 MINUTES

Product Name	Price	Volume	Price	Volume	Price	Volume	Consumption, ml per one nail	Cost per 1 nail liquid 9 ml	Cost per 1 nail liquid 15 ml	Cost per 1 nail liquid 100 ml
Cleansing spray	8.5	200	25.4	1000	25.4	1000	0.11	0.005	0.003	0.003
Eurocleanser	12	200	25.4	1000	25.4	1000	0.1	0.006	0.003	0.003
Nail Prep Aid	8.5	9	10	15	42.4	100	0.005	0.005	0.003	0.002
Ultrabond	8.5	9	10	15	42.4	100	0.001	0.001	0.001	0.0004
E.MiLac Base Gel/Sculpt-Medium/Sculpt-Maxi	13.3	9	18.2	15	82	100	0.015	0.02	0.018	0.01
E.MiLac No 022 Miss E.Mi, 9 мл	13.3	9	13.3	9	13.3	9	0.03	0.04	0.04	0.04
E.MiLac Top Gel	13.3	9	18.2	15	82	100	0.015	0.02	0.018	0.012
E.MiLac Cuticle Oil	7	9	8.5	15	35	100	0.001	0.001	0.001	0.0004
Nail Wipes Lint Free, 1000 pcs.	20	1000	20	1000	20	1000	0.4	0.008	0.008	0.008
								<b>0.11</b>	<b>0.10</b>	<b>0.09</b>

## REMOVAL OF E.MILAC: 15-20 MINUTES

Product Name	Price	Volume	Price	Volume	Consumption, ml per one nail	Cost per 1 nail liquid 200 ml	Cost per 1 nail liquid 1000 ml
Gel and Nail Polish Remover	10	200	25.4	1000	0.7	0.04	0.02
						<b>0.04</b>	<b>0.02</b>

## FRENCH MANICURE WITH E.MILAC: 30-40 MINUTES

Product Name	Price	Volume	Price	Volume	Price	Volume	Consumption, ml per one nail	Cost per 1 nail liquid 9 ml	Cost per 1 nail liquid 15 ml	Cost per 1 nail liquid 100 ml
Cleansing spray	8.5	200	25.4	1000	25.4	1000	0.11	0.005	0.003	0.003
Eurocleanser	12	200	25.4	1000	25.4	1000	0.1	0.006	0.003	0.003
Nail Prep Aid	8.5	9	10	15	42.4	100	0.005	0.005	0.003	0.002
Ultrabond	8.5	9	10	15	42.4	100	0.001	0.001	0.001	0.0004
E.MiLac Base Gel/Sculpt-Medium/Sculpt-Maxi	13.3	9	18.2	15	82	100	0.015	0.02	0.018	0.012
E.MiLac White Lotus #001	13.3	9	18.2	15	18.2	15	0.015	0.02	0.018	0.018
E.MiLac White Lotus #001	13.3	9	18.2	15	18.2	15	0.015	0.02	0.018	0.018
E.MiLac Top Gel	13.3	9	18.2	15	82	100	0.015	0.02	0.018	0.012
E.MiLac Cuticle Oil	7	9	8.5	15	35	100	0.001	0.001	0.001	0.0004
Nail Wipes Lint Free, 1000 pcs.	20	1000	20	1000	20	1000	0.4	0.008	0.008	0.008
								<b>0.11</b>	<b>0.09</b>	<b>0.08</b>

### NATURAL NAIL STRENGTHENING BY GEL

Product Name	Price	Volume	Price	Volume	Price	Volume	Price	Volume	Consumption, ml per one nail	Cost per 1 nail gets 5 g	Cost per 1 nail gets 15 g	Cost per 1 nail gets 50 g	Cost per 1 nail gets 100 g
Eurocleanser E.Mi	12	200	25.4	1000	25.4	1000	25.4	1000	0.1	0.006	0.003	0.003	0.003
Nail Prep Aid	8.5	9	10	15	42.4	100	42.4	100	0.005	0.005	0.003	0.002	0.002
Ultrabond	8.5	9	10	15	42.4	100	42.4	100	0.001	0.001	0.001	0.0004	0.0004
Super Bond Gel	20	10	22.5	15	121	100	121	100	0.01	0.020	0.015	0.012	0.012
Soft Nude/Pink/Easy One Gel	10.3	5	25	15	60	50	110	100	0.1	0.206	0.167	0.120	0.110
Composite gel	10.3	5	25	15	60	50	110	50	0.03	0.062	0.050	0.036	0.033
Classic or French coating with gel paints	8.5	5	8.5	5	8.5	5	8.5	5	0.015	0.026	0.026	0.026	0.026
Brilliant Finish Gel	25	15	25	15	95.2	100	95.2	100	0.015	0.025	0.025	0.014	0.014
									<b>0.350</b>	<b>0.289</b>	<b>0.213</b>	<b>0.200</b>	

### NAIL CORRECTION

Product Name	Price	Volume	Price	Volume	Price	Volume	Price	Volume	Consumption, ml per one nail	Cost per 1 nail gets 5 g	Cost per 1 nail gets 15 g	Cost per 1 nail gets 50 g	Cost per 1 nail gets 100 g
Eurocleanser E.Mi	12	200	25.4	1000	25.4	1000	25.4	1000	0.1	0.006	0.003	0.003	0.003
Nail Prep Aid	8.5	9	10	15	42.4	100	42.4	100	0.005	0.005	0.003	0.002	0.002
Ultrabond	8.5	9	10	15	42.4	100	42.4	100	0.001	0.001	0.001	0.0004	0.0004
Super Bond Gel	20	10	22.5	15	121	100	121	100	0.01	0.020	0.015	0.012	0.012
Soft Nude/Pink/Easy One Gel	10.3	5	25	15	60	50	110	100	0.1	0.206	0.167	0.120	0.110
Classic or French coating with gel paints	8.5	5	8.5	5	8.5	5	8.5	5	0.015	0.026	0.026	0.026	0.026
Brilliant Finish Gel	25	15	25	15	95.2	100	95.2	100	0.015	0.025	0.025	0.014	0.014
									<b>0.288</b>	<b>0.239</b>	<b>0.177</b>	<b>0.167</b>	

### NAIL DECORATION USING E.MI GEL PAINTS AND ACCESSORIES

Product Name	Consumption, ml per one nail	Price, EUR*
Gemty gel	0.005 - 0.01	0.014-0.028
Art painting with E.Mi gel paints	0.005 - 0.01	0.009-0.028
Art painting with EMPASTA gel paints	0.005 - 0.01	0.001-0.024
Liquid Stones	0.005 - 0.01 - 0.02	0.01-0.02-0.04
Velvet Sand	0.01-0.02	0.005-0.011
Glossy foil for GLOSSEMI-manicure	1-5 cm	0.015-0.03
PRINCOT for PRINCOT-manicure	1-5 cm	0.01-0.05
TEXTONE for TEXTONE-manicure	0.005 - 0.01 ml	0.004-0.008
Decoupage (3D brooch)	1 pcs from Decoupage Stickers 3D Vintage	0.07
NAILCRUST Pattern Sliders	1 pcs NAILCRUST	0.074-0.15
Charmicon 3D Silicone Stickers	1 pcs Charmicon	0.018-0.096
NAILDRESS Slider Design	1 pcs NAILDRESS	0.043-0.138
Pigment for rubbing in	1 g per 80 clients	0.02-0.2
Rhinestones	1 pcs	0.02



# E.MI CARE SYSTEM

## WHITENING AND SMOOTHING OUT OF THE HAND SKIN

Product Name	Volume	Price
Crystal Peeling-Mousse, 150 g.	150	0.35

## PARAFFIN THERAPY FOR HANDS

Product Name	Volume	Price
Silk Exfoliant. Peeling, 175 g.	175	0.09
Paraffin Effect Mask, 150 g.	150	0.13

**Total 0.22**

## ANTI-AGING TREATMENTS FOR HAND SKIN

Product Name	Volume	Price
Silk Exfoliant. Peeling, 175 g.	175	0.09
Regenerating Mask, 175 g.	175	0.17

**Total 0.26**

## ULTRA MOISTURIZING TREATMENT FOR HAND SKIN

Product Name	Volume	Price
Hand and Body Cream, 30 ml, in assortment	30	0.3
Souffle Cream, 200 g, in assortment	200	0.1
Hand and Body Lotion, 200 ml, in assortment	200	0.1

**Total 0.50**

### THE SCHOOL OF NAIL DESIGN BY EKATERINA MIROSHNICHENKO

INTERNATIONAL OFFICE  
Department of cooperation with clients and representatives  
Štefánikova 203/23, Prague 5 - Smichov, 150 00. Tel. +420 773 208 276, prague@emischool.com, post@emischool.com, emischool.com

HEAD OFFICE  
Department of cooperation with clients and representatives:  
Khalturinsky Lane 160/102, Rostov-on-Don, Russia  
Tel. +7 863 300 26 00, +7 928 229 28 09, info@emi-school.ru  
Sales Department:  
Khalturinsky Lane 160/102, Rostov-on-Don, Russia  
Tel. +7 863 269 51 15, emi-school.ru

### E.MI NAIL SCHOOL AND OFFICIAL DISTRIBUTORS

CYPRUS  
2 EFESSOU street, Amathus Area, Limassol  
Emerald coast building, Shop 2  
Tel. +357 964 966 45, cyprus@emischool.com  
emischool.com.cy

CZECH REPUBLIC  
Nám. 14. Října, 17, Praha 5, Prague, 150 00,  
Tel. +420 770 155 800, czech@emischool.com  
emischool.cz

ESTONIA  
Pärnu mnt. 139A/1, Tallinn. Tel. +372 580 071 54  
estonia-school@emischool.com, estonia-sale@emischool.com  
emischool.ee

## WHITENING AND SMOOTHING OUT OF THE FOOT SKIN

Product Name	Volume	Price
Crystal Peeling-Mousse, 150 g.	150	0.69

## PARAFFIN THERAPY FOR FEET

Product Name	Volume	Price
Silk Exfoliant. Peeling, 175 g.	175	0.17
Paraffin Effect Mask, 150 g.	150	0.27

**Total 0.44**

## ANTI-AGING TREATMENTS FOR FOOT SKIN

Product Name	Volume	Price
Silk Exfoliant. Peeling, 175 g.	175	0.7
Regenerating Mask, 175 g.	175	0.34

**Total 0.51**

## ULTRA MOISTURIZING TREATMENT FOR FOOT SKIN

Product Name	Volume	Price
Hand and Body Cream, 30 ml, in assortment	30	0.6
Souffle Cream, 200 g, in assortment	200	0.2
Hand and Body Lotion, 200 ml, in assortment	200	0.2

**Total 1.00**

FRANCE  
9 place du Bicentenaire 42100 Saint Étienne  
Tel. +33 427 773 475, +33 619 570 283, +33 623 733 290  
france-school@emischool.fr, france-sales@emischool.fr  
emischool.fr

GERMANY  
Kirschblütenstr. 35, 65201 - Wiesbaden  
Tel. +49 176 314 232 22, +49 611 510 514 28, +49 364 344 333 21  
germany@emischool.com, emischool-germany.com

GREECE  
Nikolaou Plastira 97, Aigaleo, shop 1, Athens  
Tel. +30 213 041 24 28, +30 694 799 91 73  
greece-school@emischool.com, greece-sale@emischool.com  
emischool.gr

IRELAND  
First Floor, Unit 2, Crossland's, Business Centre, Ballymount, Dublin 12  
Tel. +353 870 904 137, +353 019 060 894, ireland@emischool.com  
emischool.ie

ISRAEL  
2 Habonim st., South Industrial Zone, Netanya  
Tel. +972 509 200 011, israel-school@emischool.com  
Tel. +972 509 200 011, +972 979 966 44, israel-sale@emischool.com

ITALY  
Via restelli/B, 21013 Gallarate (Varese)  
Tel. +39 331 701 442, +39 331 793 615  
italy-school@emischool.com, italy-sale@emischool.com  
emischool.it

## LITHUANIA

Taikos pr. 4a, LT-91229 - Klaipeda  
Tel. +370 656 671 55, lithuania@emischool.com  
emischool.lt

## LATVIA

Tallinas 59, Riga, LV-1009  
Tel. +371 224 000 08, latvija-sale@emischool.com  
emischool.lv

## POLAND

ul. Grupy AK Polnoc 4 U16\*, 00-713, Warszawa  
Tel. +48 884 998 642, poland-sale@emischool.com  
emischool.pl

## PORTUGAL

(school only)  
Av. Defensores de Chaves, 1-B, 1000-109 Lisboa  
Tel. +351 218 269 255, +351 918 037 777  
portugal-school@emischool.com  
emischool.pt

## ROMANIA

Cluj-napoca, str. Trifoiului nr.16, bl.H4, ap.5, jud. Cluj, Romania  
Tel. +40 756 792 111, +40 364 418 056,  
romania-school@emischool.com, romania-sale@emischool.com  
emischool.ro

## SOUTH KOREA - E.Mi NAIL SCHOOL

3F, 46-16, Namchang-Dong, Jung-Gu-Seoul,  
Tel. +82 103 686 86 31, south-korea@emischool.com

## SOUTH KOREA - OFFICIAL DISTRIBUTORS

4005 office, 4th floor, Zioplace, 4,  
Dongcheon-ro, Busanjin-gu, Busan, 47299  
Tel. +82 105 274 40 07, south-korea@emischool.com  
emischool.kr

## SPAIN

c/Huerta Vieja 8, Paradas, Sevilla,  
Tel. +34 696 753 883, emischoolandalucia@gmail.com  
Showroom:  
avenida Andalucia, 10, Sevilla, Tel.: +34 644 170 469  
emischool.es

## SWITZERLAND

General Dufour Passage 12, 2502 Biel  
Tel. +41 323 237 232  
switzerland-school@emischool.com, switzerland-sale@emischool.com  
emischool.ch

## UNITED KINGDOM

Rear of 1185 High Road, Chadwell Heath, Romford, Essex RM6 4AL  
Tel. +44 7787 428 754, +44 7961 294 315  
uk-sale@emischool.com, uk-school@emischool.com  
emischool.uk

## UAE

Prime Business Tower, office 1502A, Jumeirah Village Circle 1,  
Dubai, UAE  
Tel. +971 439 913 31, +971 526 455 222, +971 527 333 287  
uae-school@emischool.com, uae-sale@emischool.com  
emischool.ae

## TUNIS

H.A. BEAUTY SARL, IMM. INES, Rue de Lac Léman, bureau 8, Les  
Berges du Lac 1053, Tunis  
Tel. +216 550 255 22, +216 719 615 58,  
tunisia-school@emischool.com, tunisia-sale@emischool.com  
emischool.tn

## WHOLESALERS

### BELGIUM

Heremietstraat 2, Assenede. Tel. +32 496 342 032  
Heist-Goorstraat 2, Heist op den Berg, 2220. Tel. +32 15 68 11 38

### DENMARK

Løjtoftevej 68, Nakskov. Tel. +45 527 803 62  
Classensgade 15, 2. th, 4800 Nykøbing Falster. Tel. +45 715 133 47

### FINLAND

Mustanlahdenkatu 26, 33200 Tampere. Tel. +358 445 336 953

### IRAN

Gentile Store No.122, Manocherhi Street,  
Saadi Street, Tehran  
Tel. +98 77 512 655, +98 912 109 92 24

### KINGDOM OF BAHRAIN

Unit 136A & 135B, Building 20, Road 383, Block 316, Manama  
Tel. +97 339 620 933

### MEXICO

Av Álvaro Obregón 213 Local B, Roma Nte., 06700 Ciudad de México,  
Mexico  
Tel. +52 5 552 075 557

### NETHERLANDS

Stan Laurelstrook 2, 2726VZ, Zoetermeer. Tel. +31 628 505 208  
Passage 3, 3331 CM Zwijndrecht, Tel. +31 681 491 228

### NORWAY

Tuneveien 1A, Sarpsborg 1710, Tel. +47 979 485 87

### SLOVAKIA

Haanova 12, 851 04 Bratislava  
Tel. +421 911 905 509

### SLOVENIA

Nillandia, Kotnikova ulica 5, Ljubljana, Tel. +38 664 118 311

### SPAIN

c/Rambla de Poblenou, 122, Barcelona  
Tel. +34 618 523 012  
av. Cardenal Benlloch, 77, Valencia  
Tel. +34 646 552 542  
Crta. Alquerias, 53 PBJ, Santomera, Murcia  
Tel. +34 625 915 051  
c/Aparecidos, 17 B, Roquetas de Mar, Almería  
Tel. +34 673 640 999  
c/Duque de Tamames, 41, bajo, Orihuela, Alicante  
Tel. +34 647 871 138  
c/Monagotorre, 9, bajo, Durango, Vizcaya  
Tel. +34 663 955 014  
c/Pare Jeroni Boscana, 32, bj 3, Palma de Mallorca  
Tel. +34 607 314 974  
c/1 de Mayo, Balazote, Albacete  
Tel. +34 630 718 030

### USA

1717 North Main street, Los Angeles, CA 90012  
Tel. +1 213 485 83 08

EMISCHOOL.COM



**FAST AND CONVENIENT!**  
**ORDER ON SHOP.EMISCHOOL.COM**

